



It all starts with the
foundation

Healthy Home 2021

Exterior features that make a Big Impact

Sierra Pacific Windows

The only window company in the world with sustainable vertical integration owning every step of the manufacturing process from seed-to-window.

- Third-generation family-owned business
- Manufacturing plants located in California and Wisconsin
- LowE-366 with TrueWarm® Edge for greater thermal efficiency and superior seal
- Biophilic Design invites more of the outside inside
- Urban Casement Picture Windows in Matte Black

sierrapacificwindows.com

Hardie Board

Cement Siding is highly durable reducing maintenance and repair costs.

- Raw materials are low in toxicity
- More than 75% of raw materials are locally sourced
- Wood Grain Finish in Pearl and Iron Ore

Fiberon Composite Siding

For the look of wood without cutting down trees. Product is made from recycled wood and plastic.

- Fiberon saves more than 1 Million trees every year
- 2,000 recycled plastic bags are used into a single board keeping them out of our oceans and landfills
- Vertical Wall in Ipe color

Cement Driveway

Used to eliminate the use of Coal-Tar based asphalt—a major source of Polycyclic Aromatic Hydrocarbons (PAHs) in the environment—a known carcinogen.

- Consider permeable options that do not require regular sealing

Clopay Garage Doors

Durbale. Energy Efficient.

- Modern Steel Collection
- Ultra-Grain Walnut Finish

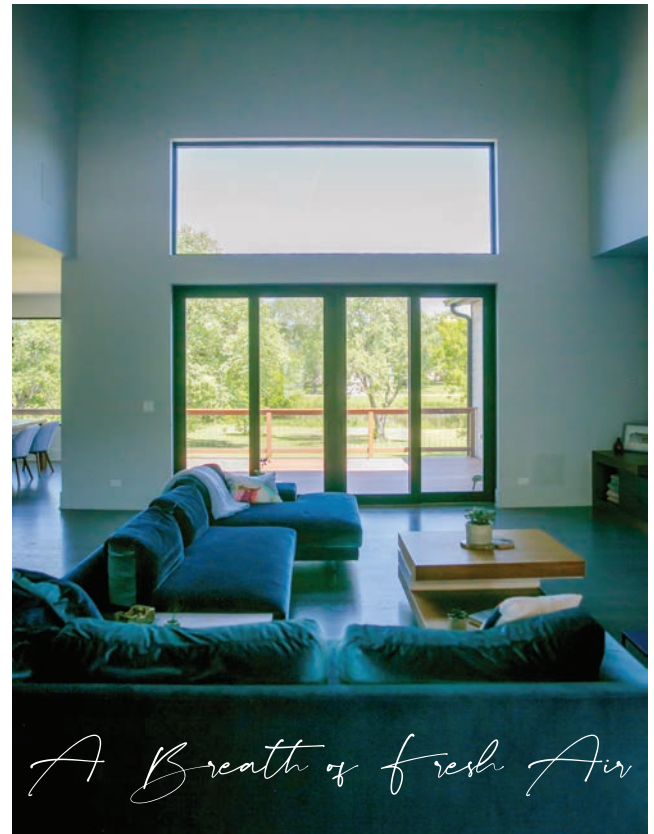
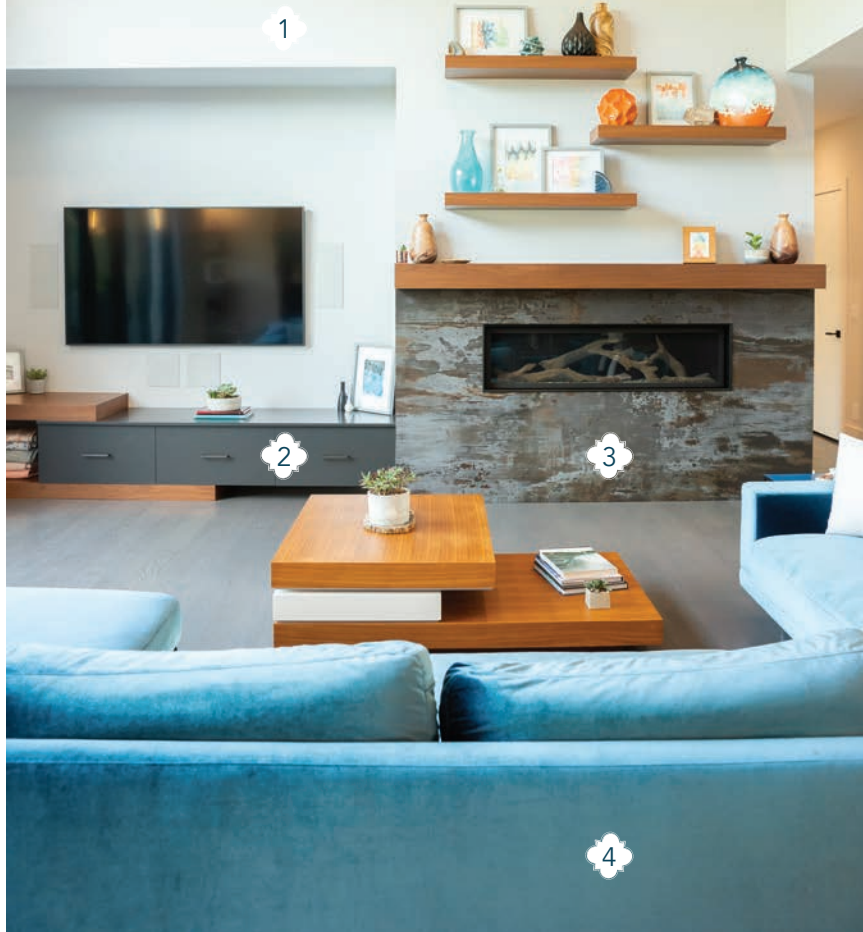
Porsche Taycan 4S

Porsche's First All-Electric Car

- Zero Emissions
- Optional leather-free, vegan interior

Available at *Motor Werks of Barrington*

Living life at it's
finest



1 AFM Safecoat

Zero VOC Paint in
Lazy Gray
thegreendesigncenter.com

2 Crystal Cabinet Works

TV Console,
Fireplace, Mantel
and Shelves

3 Fireplace Xtrordinair

6015 Linear Fireplace
with Deluxe Features
hearthandhomeusa.com

4 Rove Concepts

Dresden Modular
Sectional in Solstice

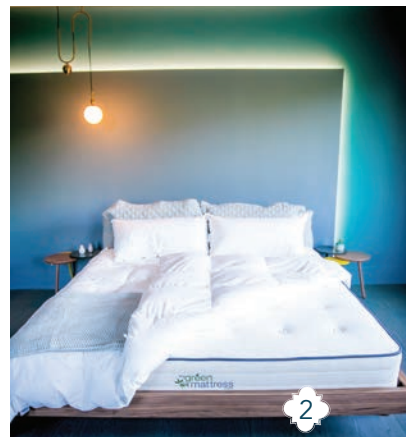
Healthy Indoor Air Quality begins by reducing your exposure to volatile organic compounds, or VOCs which are gases emitted into the air from everyday products such as household cleaners, furniture and building products. A common example is the smell of freshly applied paint. Inhaling these chemicals can be harmful to your health so it's important to use products that are low in VOCs. AFM Safecoat, Romabio and ECOS are non-toxic paints that do not contain VOCs or biocides.

The Cabinets throughout the house are GREENGUARD Gold Certified for better indoor air quality helping to reduce indoor air pollution and the risk of chemical exposure.

The Fireplace Surround by Dekton in Trilium is beautiful, ultra durable, heat and stain resistant—no sealer required. Cosentino is known for its global commitment to sustainable transparency and the Circular Economy. Fabrication by Superb Surfaces.

This artisan crafted modular sectional features kiln-dried hardwood, 100% recyclable stainless steel legs, and premium pure goose feather fill. All materials are sourced based on the highest level of sustainability.

INTERIOR DESIGN: LEEANN CHANG
STAGING: MADELYN DI IORIO
LEFT PHOTO: LINDA M BARRETT
RIGHT PHOTOS (2): CHANG2 STUDIOS



1 Two Sisters Ecotextiles

Organic Fabric
in Methow
Pigeon

2 My Green Mattress

Organic Mattress
Affordable
Locally Owned
mygreenmattress.com

3 Ogallala Comfort

Pure, Natural,
Hypoallergenic
Bedding

4 AFM Safecoat

Zero VOC Paint
in ReallyTeal

5 Brizo Litze Faucets

Chrome with
Teak Accents
brizo.com

6 Superb Surfaces

Granite Counter-
top in Black Pearl

Creating a healthier environment includes taking care of you.

Get a good night's sleep. This is when our bodies are hard at work to repair damage and recover from the everyday stressors of modern life. An organic mattress and non-toxic bedding provides the healthiest sleep ensuring you are not exposed to VOCs from chemical flame retardants, pesticides or synthetic foam, so your body can work to strengthen and balance your immune system for better overall health.

Give yourself a healing boost before you sleep. Consider a relaxing bath to calm your mind, lift your spirit and promote your body's natural ability to detox for a healthier you.

Epsom Salt Detox Bath courtesy of Branch Basics

Add 2 cups of Epsom salt plus 2 cups baking soda (which helps the body absorb magnesium while neutralizing chlorine) to a warm bath and soak for 20 minutes.



BATH PRODUCTS: JOURNEY TO GREENDOM
LEFT PHOTOS (2): LINDA M BARRETT
RIGHT PHOTOS (3): CHANG2 STUDIOS
MODEL: HEATH AT STEWART TALENT



Picture Perfect Clean

Native Trails

For 25 years Native Trails has remained consistent—committed to only make and sell products that have a positive influence on our world, both socially and environmentally.

Concrete Sink

NativeStone®—40 percent lighter, much stronger, and more sustainable than traditional concrete sinks.

Solace Mirror & Shelf in Midnight Oak

- ♦ Transitional style circular mirror with non-beveled glass
- ♦ FSC® certified Oak shelf with Low VOC finish

nativetrailshome.com

Brizo Litze Faucet

- ♦ Brilliance Luxe Gold with knurled handles

Superb Surfaces

- ♦ Quartz Countertop in Diresco Belgium Blue

Crystal Cabinet Works

- ♦ Arizona Cypress Wood Grain Melamine
- ♦ GREENGUARD Gold Certified Cabinetry

Branch Basics

Founded by women on a mission to help people create healthy homes, Branch Basics replaces all of your cleaning products in one clean sweep.

- ♦ Powerful
- ♦ Non-Toxic
- ♦ Affordable
- ♦ Sustainable
- ♦ MADE SAFE Certified

branchbasics.com

**Branch Basics is the ONLY cleaning product used in Healthy Home Initiative construction projects.*





Gaggenau

Pioneering innovation and design to revolutionize home appliances since 1963.

400 Series Refrigerator and Freezer

- ♦ Stainless steel interior with glass shelves—reduces use of plastic
- ♦ Push to open option

400 Series Combi Steam Oven

- ♦ Energy efficient, high-performance restaurant-grade cooking technology
- ♦ Multi-functional steam oven retains the nutrients in food and cooks it more evenly
- ♦ Handleless automatic door opens hinge left or right

Featured Food Products

- ♦ Arize Kombucha
- ♦ Every Body Eat
- ♦ White Oak Gourmet
- ♦ Wunder Yogurt



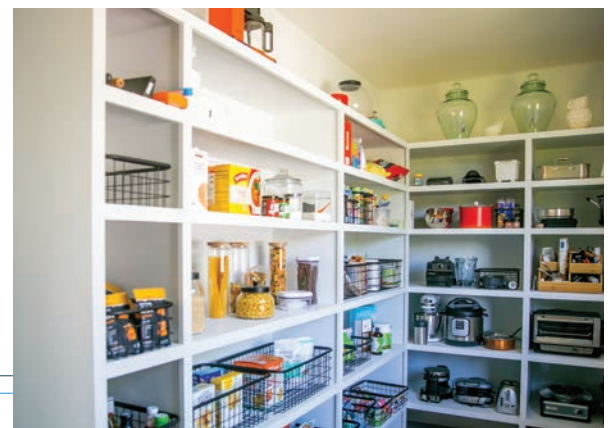
*"Let food be thy medicine
and medicine be thy food."
Hippocrates*

Food is the foundation on which our health is built.

Today, processed foods account for approximately 60% of the American diet and plays a central role in the development of chronic disease. Eating a rainbow of fruits and vegetables provides essential vitamins, minerals, and phytonutrients helps build a healthy immune system. Buy organic produce whenever possible. Download EWG's *Dirty Dozen* and *Clean 15* lists for smart shopping. EWG.org

For a healthier pantry, avoid these common ingredients that could undermine your health. Additives (High Fructose Corn Syrup, Aspartame, MSG), Artificial Colors (Red 40, Yellow 6), Preservatives (Nitrates, BHA, BHT) and Ultra-Processed Oils (canola, corn, soybean, safflower).

ENJOY REAL FOOD – unadulterated; the way nature intended.



PANTRY ORGANIZATION: TIA LYLE
TOP RIGHT PHOTO: LINDA M BARRETT
PHOTOS (3): CHANG2 STUDIOS

Healthy Home Initiative

Simply
Thankful

"A life of balance isn't typically one enormous change that equalizes all parts, but rather found in the everyday things we do."
Mariel Hemingway



Charlotta Gandolfo Tank Top
Clean Make-up by Sandy Thinnies
Oscar Isberian Rug

Creating healthy environments
from foundation to food™

Design | Build | Educate | Flourish