





# *Into the* **BLUE**

A fresh look at the moods, inspirations, and places that Pantone's Color of the Year "Classic Blue" can take us.

Produced and Written By **NATALIE SCHEBIL** | Photography By **LINDA M. BARRETT** | Modeled By **ANNA NOURBASH**

**E**VER DAYDREAM while looking up at the blue sky at dusk? Detached from your reality and embracing a blissful and stress-free state of mind... wondering what is going to happen next?

If you answered no, I would be surprised. It's very common and part of human nature to escape or go into a brief mediation several times during our day.

Blue, from a psychological point of view, creates calmness, stability, and peace. No wonder we are drawn to such an approachable and relatable color found in nature.

Our world around us may cause us to feel a lot of insecurities and restlessness. A new year calls for a tranquil and reliable foundation—mentally, physically, and within our surroundings. It's more about how color makes your feel, not just how it looks on a wall, especially within the spaces we reside.

Adding this deep hue within one's home can be applied through different products, textures, and finishes. This can be easily achieved with the right knowledge and guidance. Here are my tips to help you achieve your surrounding desires.

## *The* **MONOCHROMATIC PALETTE**

If you are feeling bold, and are looking to move away from universal neutrals, a monochromatic palette will feel more intimate to you. Monochromatic means "of or having one color". In this, case our main color is blue, and we work in other graded tones and textures within the scheme to match the color composition.

The smartest trick to start with is to blend one's furniture with the walls. Sherwin Williams paint color Navel is velvety blue that expresses tradition,

as well as boldness. Pairing blue fabrics in your furniture becomes easy to do. Just match them up to the wall color.

The most important takeaway in a monochromatic palette is texture! Texture adds interest and depth to the eye. Without texture, a room will quickly read flat. This can be achieved by pairing blue items within the same general color area, that have different finishes such as glassware or marble, or fluffy pillows with lush trim. Mixed metals, such as decorative door pulls and knobs add that extra pop of elegance. I like to think of them as the "jewelry or sparkle" that completes the look of an outfit.

Some may not be ready to fully dive "Into the Blue" just yet, and that's ok. Bravo! The first step is done knowing a positive change is needed for your well-being. Now you are looking for a space to show this new awakening.

## *The* **MIXED PALETTE**


A mixed palette of blues and supporting neutrals may be the most comforting to do.

The key here is take smaller steps and add blue items that POP. Start with a subtle warm wall color and add elements that stand out in different values of blue.

Try adding a woven throw, a lively pillow on the couch, or doing a bold wallpaper accent at the back of a bookcase to display contrasting items.

White kitchens that need an update can easily be transformed by adding a textured light blue subway tile at the backsplash.

In need of a moody powder room? Finish a cabinet vanity in Navel blue with a light blue onyx marble top. For the floor, a peacock blue penny-round mosaic with mixed neutrals creates a calming pattern.

Last finishing touch, add a scented, patterned candle that takes you to your Zen place while daydreaming away... *Into the Blue.* 





















### MONOCHROMATIC PALETTE: *Product Sources*

1. Blue Tie-Dyed Pillow; Retail Store Cashmere and Chrome Home and Design; monicasoltisinteriors.com
2. Nocturnal Ridge Vase Round; Retail Store Cashmere and Chrome Home and Design; monicasoltisinteriors.com
3. Cotton Tie-Dyed Throw with Fringe; Retail Store Cashmere and Chrome Home and Design; monicasoltisinteriors.com
4. York Wallcovering by Candice Olson Tranqui Gravure, Midnight Blooms #371289; calicocorners.com
5. Bold Blue Hexagon Mosaic; briddickhome.com
6. Alanis (KC) Upholstery; Color Navy; calicocorners.com
7. Blue Fringe, Style Bottega/Aegean; calicocorners.com
8. Capri Blue Volcano Candle; Tin Fragrance 8.5 oz.; shopangelina.com
9. Iris Ceramica Blue Wall Tile (4x8); briddickhome.com
10. Navy Cabinet Door; briddickhome.com
11. Belwith Keeler Monarch Pull in Brushed Brass; briddickhome.com
12. Vern Upholstery; VY 60 Color Sapphire; calicocorners.com
13. Diesel Living Glass Blocks Asure (Wall Tile); briddickhome.com
14. Sherwin Williams Paint Color SW6244 Naval; sherwin-williams.com
15. Belwith Keeler 1-3/16" Chrysalis Knob in Brushed Golden Brass with Frosted Glass and Belwith Keeler 1-3/16" Chrysalis Knob in Brushed Golden Brass; briddickhome.com
16. Rizzy Home Power Loomed Rug; ARY-109 Blue; Retail Store Cashmere and Chrome Home and Design; monicasoltisinteriors.com
17. Secrecy Vase Large; Retail Store Cashmere and Chrome Home and Design; monicasoltisinteriors.com



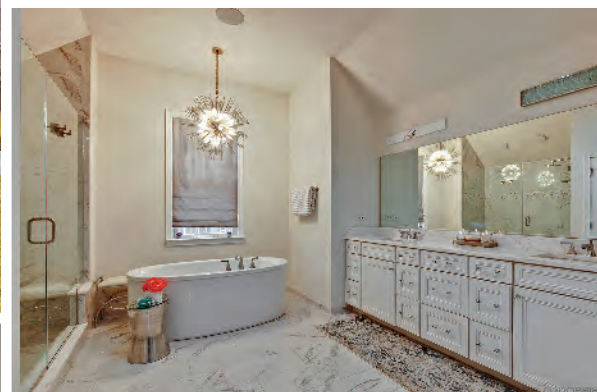
### MIXED PALETTE: *Product Sources*

1. Blue Velvet Leopard Pillow; Retail Store Cashmere and Chrome Home and Design; monicasoltisinteriors.com
2. Nocturnal Ridge Vase Round; Retail Store Cashmere and Chrome Home and Design; monicasoltisinteriors.com
3. Cobalt Blue Bohemian Glassware; parismarketantiques.blogspot.com
4. Ashton Blue Onyx Tile; briddickhome.com
5. Studio Velvet Upholstery, Color Midnight; calicocorners.com
6. Diesel Living Camp Blue Glaze Wall Tile; briddickhome.com
7. Studio Crushed Velvet Upholstery, Color Navy; calicocorners.com
8. Belwith Keeler 1-3/16" Chrysalis Knob in Brushed Golden Brass with Frosted Glass and Belwith Keeler 1-3/16" Chrysalis Knob in Brushed Golden Brass; briddickhome.com
9. Kendall Wilkinson Trimming #700; calicocorners.com
10. Magnolia Home Volume 2, Gravure Tea Rose Wall Paper #ME1531; calicocorners.com
11. Hudson Velvet (FC) Upholstery, Color Blue Nile; calicocorners.com

### FEATURED HOME IS FOR SALE

The home showcased in this feature is for sale. For more information on this property which is located at 8 Rainier Circle in South Barrington, contact Bree DiMucci/The Kim Alden Team/Baird & Warner at bree.dimucci@bairdwarner.com or call 847-858-0057.





### Anna Nourbash

Anna Nourbash is a senior at Barrington High School. She enjoys running, painting, and keeping bees. She is also the co-president of a club at Barrington High School called "Girl Effect Barrington". This nonprofit is run by a local group of girls who hold fundraisers from which proceeds are donated to 60 Million Girls. Established in 2006, the Montreal-based public foundation has a mission to educate girls in developing countries.



### Natalie Schebil

Natalie Schebil is the founder of Natalie Marie Design Group. Her clients include hospitality groups such as Hyatt, Hilton, and Marriott as well as Chicago boutique hotels. In 2012, she founded Natalie Marie Design Group. Her portfolio includes new construction single family homes in Lincoln Park, complete renovations in the iconic Watertown building, and residential projects in the Northwest Suburbs. Reach her at [natalie@nmdesigngroup.biz](mailto:natalie@nmdesigngroup.biz) or call 312-375-7572. Visit [nataliemariadesigngroup.biz](http://nataliemariadesigngroup.biz).