



QUINTESSENTIAL
BARRINGTON®

Inaugural
WHO'S WHO
in
Home Design

March/April 2021 Special Advertising Section

5 WAYS to CREATE *the* HOME of YOUR DREAMS *with Linly Designs*

*When it comes to designing the home of your dreams,
every detail matters.*



1

ACCESSORY CALL®

*In just 48 hours, our expert team will provide everything you need to
complete your home to perfection.*

Visit our

CLARENDON HILLS LOCATION

445 OGDEN AVE. | PH: 630.769.5099 | WWW.LINLYDESIGNS.COM



2

HOME ACCENTS

Complete the look with the right home decor & furniture pieces to accent your space.



3

DECORATIVE FINISH

Let your walls make a statement with a bespoke decorative finish designed & created by our artists.



4

WINDOW TREATMENTS

Enhance the beauty of your home with our luxury custom window treatments.



5

HOME REMODELING

Our team will assist with layouts, material selections & construction so that no detail is overlooked.





KATIE WOZNIAK

KATHERINE ELIZABETH DESIGNS

Expertise: We are a full service residential, hospitality, and commercial interior design firm. We focus on a broad range of projects from furniture, window treatments, paint, and accessories to full custom homes.

Signature Style: We balance our designs by blending sophistication with the unexpected. We are transitional grounded in timeless elements of design.

Trending: We are still seeing open concept main spaces, but now with a balance of private sanctuary spaces. There is an overall reemergence of adding warmth by layering inviting textures, color, and natural elements. We are continuing to balance functionality, comfort, and aesthetics.

847-381-9892 | info@kedinteriors.com
kedinteriors.com | [@katherineelizabethdesigns](https://www.instagram.com/katherineelizabethdesigns)



katherine elizabeth
DESIGNS

HOME SHOP NOW OPEN

Stop by and shop our curated home shop, a collection of items at every price point. We offer a fun and attainable mix for you.

Located at 800 S. NW Hwy., Suite 100, in Barrington, or shop with us online at kedinteriors.com.







MATTHEW GOYKE

MATTHEW GOYKE DESIGN, LLC

Expertise: Listening. Understanding the values, goals, and needs of homeowners at a deep level and transforming those goals into beautiful, rejuvenating spaces and homes.

Sustainable, energy-efficient, and healthy buildings, excelling at both the technical and artful implementation of sustainable design.

Award-winning architectural design consultancy licensed Architect in Illinois, Hawaii, and California, NCARB Certified (allows for easy reciprocity in other states), Member American Institute of Architects. Project sectors include residential (custom homes, additions, ADUs, renovations), and commercial (retail, restaurant, and warehouse).

Signature Style: Luxury living off-the-grid, Sustainable design, mid-century modern, historic, vacation, and dream homes.

Trending: In response to the pandemic, the home is being reimagined to accommodate a wide range of activities—indoor outdoor gathering spaces, working from home, yoga rooms, art studios and intergenerational living. Increase in Accessory Dwelling Units designed to accommodate this variety of activities. Continued interest in sustainable design and healthy home design, with more emphasis on energy independence creating safe and secure sanctuaries.



630-338-2310
matt@matthewgoyke.com
matthewgoyke.com



REDUX

INTERIOR DESIGN

847-727-1653

Jennifer@ReduxInteriorDesign.com

ReduxInteriorDesign.com

@reduxinteriordesign



JENNIFER MCGINNIS

REDUX INTERIOR DESIGN

Expertise: Whole room, whole floor, whole home design with an emphasis on layered lighting design.

Signature Style: Modern Classic

Trending: With the growing awareness of personal health, attention to our well-being is taking center stage and the need for nurturing environments are a must in 2021. Whether you're looking to improve the comfort of your home or escape to your own personal space, such as a hobby garage or studio, spaces must be flexible, functional, and easy to navigate.

Some trends we can look forward to are cleaner, simpler lines in cabinetry and furnishings, with a movement toward modern design. The need for spaces with dual purposes, easy-to-clean surfaces, and comfortable seating for when your kitchen becomes your office and your kid's classroom.

Versatile, dimmable LED lighting solutions are becoming the new replacement for traditional incandescent lighting that can not only create an intimate dining experience, but also bring energy and illuminate everyday tasks.

Bring the comfort of nature into your home through layering neutral tones with an emphasis on texture or create a bold look through a singular color such as charcoal, peacock blue, burnt orange, or rich plum. These trending tones will restore life into a modern sanctuary and reenergize the space. With comfort as the overall theme in 2021, we are making your space, yours.



CASHMERE & CHROME

HOME AND DESIGN
118 W. MAIN ST., BARRINGTON



Monica Soltis
and Betsy Breuer

MONICA SOLTIS

CASHMERE & CHROME

Expertise: Located in the heart of downtown Barrington, Cashmere & Chrome was created to open a boutique that curated unique home décor. The shop features art, furniture, window treatments, wallcoverings, rugs, lighting, and stylish accessories. In addition to rare home finds, Cashmere & Chrome offers decorating services as the store doubles as an interior design studio, where the team works on project of all sizes—full scale construction projects to home accessory calls to transform old, tired spaces. Whether you are seeking a special housewarming gift, need inspiration, or want to consult with a designer, Cashmere & Chrome is a must visit.

Signature Style: We have built a discerning appreciation for art and personalize style. Each project we work on is managed around the client's needs, taste, and budget.

Trending: In many ways, the pandemic has created a major renovating fever, with people spending more time at home and wanting to refresh their spaces. In connecting with customers, the design process has turned digital, our team creates visual presentations that can be viewed from the convenience and safety of the client's home. While Cashmere & Chrome can design to the client's style, their naturally uncluttered modern approach falls right in line with this years' trends of light and bright spaces.

847-431-6296 | monicasoltis@outlook.com
CashmereandChrome.com
[@cashmereandchrome](https://www.instagram.com/cashmereandchrome)



RESIDENTIAL CONSULTING GROUP

Expertise: Building your dream home can be an amazing experience, but the truth is it's not easy. In a perfect world you'd want to know what your home would cost, what the process entails, and have professional answers to all your questions before you spend hundreds of thousands of dollars buying a piece of land. Sadly, to get all those answers you'd need to speak with an architect, homebuilder, engineer, building department, and real estate agent in hope of discovering if your dream is even possible.

That's why we created the Residential Consulting Group. We specialize in showing you if your dream home is possible before you spend hundreds of thousands of dollars. With over 25 years of experience we show you what your home will cost, answers all of your questions, and give you a step-by-step plan showing you what to do next. As your consultant we tell you what you need to hear, not what you want to hear. With our services there's no sales pitch and no obligation to use a particular builder or architect. You stay in control of your project! If you're thinking of building your dream home, let us help you get the professional answers you need to make the right decisions.

Signature Style: Whether you're dreaming of a contemporary styled home or traditional estate, we excel at showing you how to maximize your budget and create a design that perfectly matches your dream.

Trending: Open floor plans and bright spaces combined with value engineering are the design trends we're seeing. Today's homeowners are smart and they want to know how to maximize their budget while simultaneously incorporating these design trends. Sadly, balancing these elements isn't easy, but with our services you now have a partner who can efficiently show you how to save money and create the home of your dreams.

RESIDENTIAL CONSULTING GROUP

847-842-9182 | info@residentialconsultinggroup.com | RCGanswers.com



ANDY MICHAELIS

ALL AMERICAN RECLAIM

Expertise: Unique, Reclaimed Materials and Custom Reclaimed Furniture.

Signature Style: Urban Industrial/Rustic & Refined.

Trending: With everyone spending more time at home this year, home improvements have become a huge priority! We want our spaces to be functional, comfortable, and unique. We are seeing people create spaces that reflect their individual style using reclaimed wood and rustic accents.

Reclaimed wood is used in a variety of design projects because it has authentic character and a rich history that brings us back to our roots.

Trending design ideas can include reclaimed floating shelves, a new mantel for your fireplace, an accent wall with reclaimed shiplap, or a new island or bar top that is functional, but still shows the warm character of 100 years of history.

Designs with reclaimed materials allow you to create elements that can be combined with almost any style, while also doing something good for our environment! 2021 is the perfect time to make your home or business design uniquely yours.

224-209-8283

AllAmericanReclaim@gmail.com

AllAmericanReclaim.com

[https://www.facebook.com](https://www.facebook.com/allamericanreclaim)

/allamericanreclaim

[https://www.instagram.com](https://www.instagram.com/allamericanreclaim/)

/allamericanreclaim/



JAMIE TREWARTHA & PAUL PALUCH

CLOSETS BY DESIGN

Expertise: Organization solutions for closets, offices, garages, pantries, mud rooms and more!

Signature Style: We are locally owned and produce everything in the Chicagoland area. To fit the lifestyle of any client, we create customized organizational solutions in a wide range of styles for virtually any location in the home. We have more than 25 Designers and 10 Installers on staff—no contractors allowed! All personalized design consultations are free and installation is free.

Trending: Textured woodgrains that suit a customer's classic or contemporary style that are still environmentally friendly and affordable is all the rage. We offer a wide selection of colors that will satisfy any personal preferences. Customer needs are changing, too. More people are staying home whether for work, school, or entertainment and there's renewed interest in maintaining an organized household for the whole family. There is a big focus on maximizing existing spaces for multiple purposes, especially for home offices and garages. Most homes used to have one area dedicated to the home office; now with more people remote from work or school, there are multiple working areas inside the house.

630-501-0190 | Sales@ChicagolandCBD.com
ClosetsbyDesign.com | [@closetsbydesign](https://www.instagram.com/closetsbydesign)

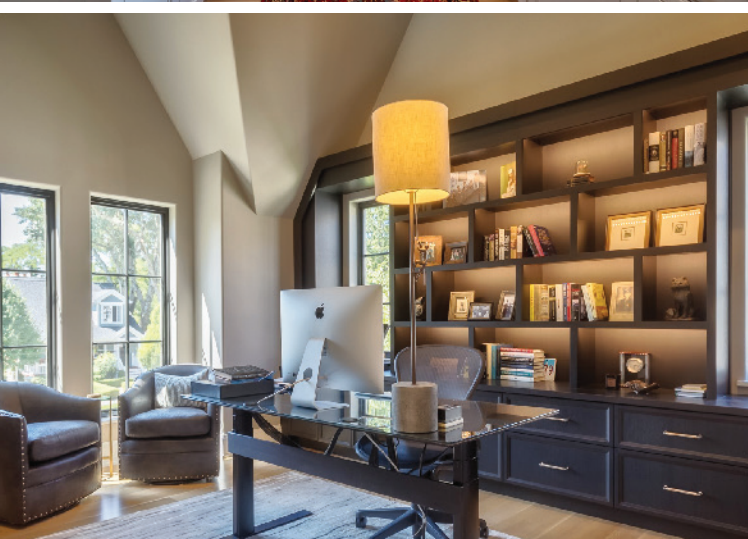


Jamie



Paul





DEAN SNOW

DEAN SNOW FINE HOMES

Expertise: Designing and building uniquely personal homes.

Signature Style: Transitional

Trending: The trend is for simple, transitional designs with a thoughtful blend of natural materials used in a variety of styles and finishes to create a clean, yet interesting palette of color and texture. There are limitless ways use these materials and our clients see these products as way to personalize their home, and they are doing just that.

We are experiencing homeowner demand for personalization of space as never before, well-thought-out personalized spaces for family, as well as individual areas for a specific lifestyle. Versatility of family areas and entertainment is important, however personalized designated space is at the top of the list for most homeowners. Home office space for his and her is so important now, not just for work, but for mindful space as well.

These trends will continue to reflect a more purposeful, transitional home design that is as organized as our technology driven lifestyles, punctuated with beautiful natural materials which add warmth throughout the home.

847-381-2080 | dean@deansnowfinehome.com
DeanSnowFineHomes.Com





WALTER E. SMITHE

FURNITURE & DESIGN

Expertise: Free designer services whether you need one perfect piece or a fully designed home; primary and secondary residences with an emphasis on custom design.

Signature Style: Our relationship with over 250 of the leading manufacturers means you never have to compromise your style when you choose Smithe. We have you covered from transitional to contemporary and everything in between.

Trending: 2021 will be remembered as the year of the Home Hub. The extra time spent at home has us reevaluating our space to maximize comfort, function, and beauty. All areas that Walter E. Smithe has perfected in our 76 years in business.

Curating a personalized space that tells your story and showcases what you love has taken center stage this year. Setting the base with clean, modern lines paired with organic elements and a soft, but bright color creates a warm and rich palette. Layer in whatever it may be that brings you joy, be it color, texture, your favorite antique, or a showstopping statement piece like a gorgeous sideboard.

Smithe designers excel at capturing what is important to you and are ready to help you make the most of your home.

800-948-4263
contactus@smithe.com
Smithe.com
[@wesmithefurniture](https://www.wesmithefurniture.com)



Est. 1945

WALTER E. SMITHE

Furniture & Design



CRAIG CIAGLIA

HOMES BY PINNACLE

Expertise: Designing and building custom homes.

Signature Style: Traditional, Transitional, and Contemporary.

Trending: As a family-owned company with over 70 years of combined experience, my father and I understand that clients want more out of their homes. They want spaces that reflect the trends of today, while simultaneously allowing their home to age well with time. To achieve this we focus on creating homes with a sense of timeless elegance and combine it with the flexibility for adaptation. When done correctly the home captures the design characteristics of today while allowing it to easily adapt to future design trends

This design philosophy goes beyond fabrics and furnishings. It embraces the 'big picture' of how our clients live and allows their home to age gracefully along with them. Whether it's traditional, transitional, or contemporary—our experience has shown us that homes which combine timeless elegance with the flexibility of adaptation will always be in style.

847-842-1840 | craig@homesbypinnacle.com

HomesbyPinnacle.com

<https://www.instagram.com/homesbypinnacleinc/>





847.705.9569

kelly@interiorenhancementgroup.com

InteriorEnhancementGroup.com

@interiorenhancementgroup



KELLY GUINAUGH

INTERIOR ENHANCEMENT GROUP

Expertise: IEG is a full-service studio known for its award-winning, client-oriented approach and one-of-a-kind luxury homes, hospitality spaces, and commercial projects. It brings decades of experience and insight to each project, focusing as much on problem solving and space planning as choosing furnishings you will love. The studio's team approach ensures that multiple designers and a project manager each contribute their unique perspective and talents to your project, producing the highest level of creativity and function in the final plan.

Signature Style: Style is not about me, it's about my clients. My tag line says it all: Your Home. Your Style. My team and I always interpret and enhance our clients' personal preferences, because no two spaces should ever be the same.

Trending: Well-appointed home offices, outdoor spaces, multi-tasking spaces, and second homes will continue to boom. Comfort and luxury will top the list for all of those projects. The past year has taught us that we should not take our homes for granted. They are truly our sanctuaries.



Interior
Enhancement
group

Celebrating
20
YEARS
in 2020

YOUR HOME. YOUR STYLE.



CHRISTINE M. JURs

ADVANCE DESIGN STUDIO, LTD.

Expertise: Home remodeling, design-construction including kitchens, baths, basements, additions, 3-season rooms, specialty rooms, and whole home renovations.

Signature Style: We love it all and cater to custom design our client's style.

Trending: Homeowners are looking inward as we head into the new year. Families are focusing on separation of functional work-spaces, dual-purpose kitchen islands, family-fun basements, adult getaway areas, and the classic 3-Season's room all in lieu of expensive family vacations.

847-836-2600 | requests@AdvanceDesignStudio.com
AdvanceDesignStudio.com
[@advancedesignstudio](https://www.instagram.com/advancedesignstudio)



Home Design Trends for 2021 Event

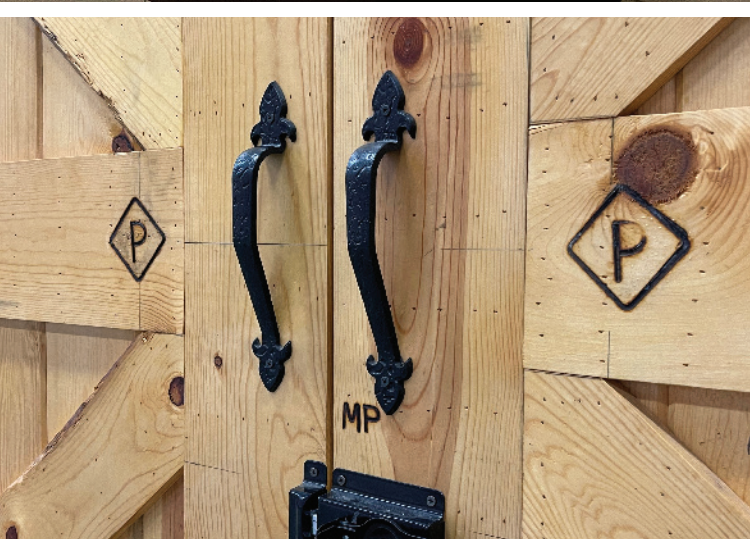
VIRTUAL PRESENTATION

Saturday, March 27 and Saturday, April 24
 10 a.m.

REGISTER at

<https://advancedesignstudio.com/home-remodeling-events/>
 or call 847-836-2600

Grab your coffee and join us for a virtual Saturday morning all about Home Design Trends for 2021—great for a simple home fashion update or a complete remodel. Learn about hot new colors, what's new in cabinetry style, how to apply textures, and what finishes are best to make every room in your home reflect the new way you live. Live Q&A will follow.



MATTHEW PABLECAS

HALE STREET GROUP INC.

Expertise: We design and build luxury homes bringing your vision to life.

Signature Style: Timeless, classic, warm, and modern finishes blended with touches of farm charm and country characteristics to feel like home.

Trending: We are prepared to combine a warmer modern feel to an even more health conscience home this year. Homeowners want more personal space without adding interior footage. The answer is covered through seamless interior/exterior living with fireplaces and TVs. More metal-framed glass doors, with light French oak plank flooring and ceiling accents. Gray and navy mixed with earth and wood tones, leathers, and metals. We expect metal roofs and board and batten siding to remain, but we believe you'll see less farm sinks and sliding barn doors and more concrete walls with retracting hidden doors. In 2021, the direction will bring all "types of modern" from Mid-Century Modern and European Modern to Old World Modern. We will see arches and eased curves re-introduced to the already popular straight and clean lined home. Authentic, sophisticated, and classic elements peppered into a timeless signature home.

847-652-6800

matt@halestreetgroup.com

HaleStreetGroup.com

[@halestreetgroup](https://www.instagram.com/halestreetgroup)

